



This document is property of Morris Valves, Inc. Their total or partial reproduction is strictly forbidden.

QUALITY MANAGEMENT SYSTEM TEAM



BALL VALVES



LOCATION



END USER

ODESSA, TX



doing well, Morris Up!
In Harmony with the Planet

This document is property of Morris Valves, Inc. Their total or partial reproduction is strictly forbidden.

QUALITY MANAGEMENT SYSTEM TEAM



BALL VALVES



LOCATION



END USER

W/LOCKING DEVICE
ODESSA, TX



doing well, Morris Up!
In Harmony with the Planet

This document is property of Morris Valves, Inc. Their total or partial reproduction is strictly forbidden.

QUALITY MANAGEMENT SYSTEM TEAM



BALL VALVES



LOCATION



END USER

ODESSA, TX



doing well, Morris Up!
In Harmony with the Planet

This document is property of Morris Valves, Inc. Their total or partial reproduction is strictly forbidden.

QUALITY MANAGEMENT SYSTEM TEAM



BALL VALVES



LOCATION



END USER

ODESSA, TX



doing well, Morris Up!
In Harmony with the Planet 

This document is property of Morris Valves, Inc. Their total or partial reproduction is strictly forbidden.

QUALITY MANAGEMENT SYSTEM TEAM



CHECK VALVES



LOCATION



END USER

ODESSA, TX



doing well, Morris Up!
In Harmony with the Planet 

This document is property of Morris Valves, Inc. Their total or partial reproduction is strictly forbidden.

QUALITY MANAGEMENT SYSTEM TEAM



IN-LINE CHECK VALVES



LOCATION



END USER

ODESSA, TX



doing well, Morris Up!
In Harmony with the Planet 

This document is property of Morris Valves, Inc. Their total or partial reproduction is strictly forbidden.

QUALITY MANAGEMENT SYSTEM TEAM



FITTINGS



LOCATION



END USER

ODESSA, TX

TEES & ELBOWS, 3000 PSI, 304 SST



doing well, Morris Up!
In Harmony with the Planet

This document is property of Morris Valves, Inc. Their total or partial reproduction is strictly forbidden.

QUALITY MANAGEMENT SYSTEM TEAM



API6D LUBRICATED PLUG VALVE



LOCATION



END USER

Size: 2", 3" & 6"

UTILIZADAS COMO MARCA ESTÁNDAR; PARA EL MANEJO DE ASFALTO LÍQUIDO A 260 °C.



doing well, Morris Up!
In Harmony with the Planet

This document is property of Morris Valves, Inc. Their total or partial reproduction is strictly forbidden.

QUALITY MANAGEMENT SYSTEM TEAM



API6D BALL VALVES



LOCATION



END USER

2, 000 PSI, SEAL-WELDED, NACE MR01-7. LEVER WITH LOCKING DEVICE. BODY CARBON STEEL.

SIZES: ½", ¾" & 1"



doing well, Morris Up!
In Harmony with the Planet

This document is property of Morris Valves, Inc. Their total or partial reproduction is strictly forbidden.

QUALITY MANAGEMENT SYSTEM TEAM



API6D LUBRICATED PLUG VALVE



LOCATION



END USER

Size: 4", Class 600, Threaded.
SALIDA POZO PETROLERO.



doing well, Morris Up!
In Harmony with the Planet

This document is property of Morris Valves, Inc. Their total or partial reproduction is strictly forbidden.

QUALITY MANAGEMENT SYSTEM TEAM



TRUNION BALL



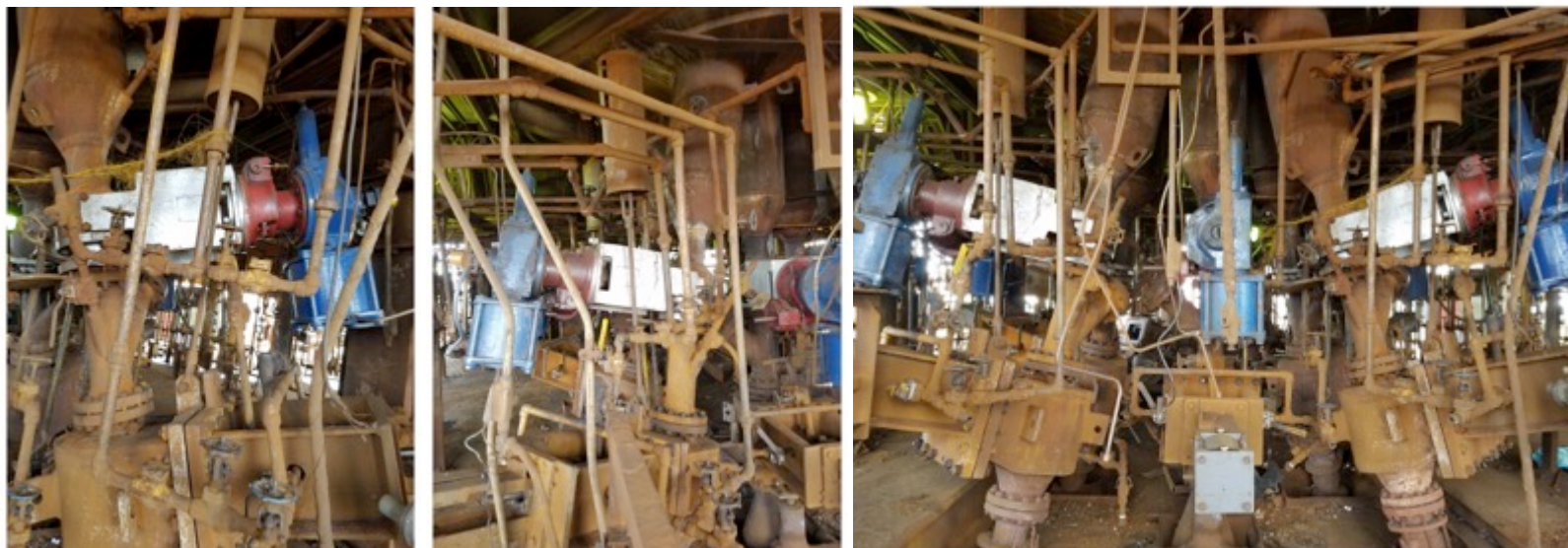
LOCATION



END USER

Mounted, Size: 6", High Temperature, with Pneumatic Actuator.

BEFORE: Imagen suministrada por el cliente con su solicitud.



doing well, Morris Up!
In Harmony with the Planet

This document is property of Morris Valves, Inc. Their total or partial reproduction is strictly forbidden.

QUALITY MANAGEMENT SYSTEM TEAM



TRUNION BALL VALVES



LOCATION



Orinoco Iron®

END USER

Mounted, Size: 6", High Temperature, with Pneumatic Actuator.

BEFORE: Imagen suministrada por el cliente con su solicitud.



doing well, Morris Up!
In Harmony with the Planet

This document is property of Morris Valves, Inc. Their total or partial reproduction is strictly forbidden.

QUALITY MANAGEMENT SYSTEM TEAM



TRUNION BALL VALVES



LOCATION



Orinoco Iron®

END USER

Mounted, Size: 6", High Temperature, with Pneumatic Actuator.

AFTER: Válvula fabricada conforme solicitud de cliente.



doing well, Morris Up!
In Harmony with the Planet

This document is property of Morris Valves, Inc. Their total or partial reproduction is strictly forbidden.

QUALITY MANAGEMENT SYSTEM TEAM



HEATING JACKETED CONTROL VALVES



LOCATION



END USER

Control Valves para Brea de Alquitrán para Ánodos, **DN80/PN16**



doing well, Morris Up!
In Harmony with the Planet

This document is property of Morris Valves, Inc. Their total or partial reproduction is strictly forbidden.

QUALITY MANAGEMENT SYSTEM TEAM



HEATING JACKETED CONTROL VALVES



LOCATION

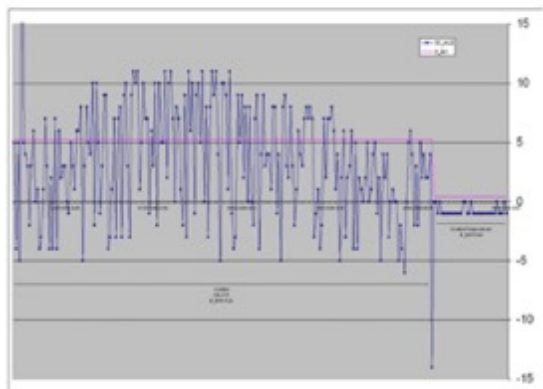


END USER

Control Valves para Brea de Alquitrán para Ánodos, **DN80/PN16**

Overload trend of Liquid Tar

(Place the cursor over the image and move)



The last 250 loads, where it could be observed a drop from -5 to 10 kg (approximately) until reaching a load difference band from -1 to 0 kg between the desired value and the actual load, whom emigrate from an On/Off Control Valve to the Heating Jacketed Control Valve (WBV TYPE) from MORRIS VALVES.

TENDENCIA DE SOBRECARGA DE BREA DE ALQUITRÁN PARA ÁNODOS.

Las últimas 250 cargas, donde se puede observar una caída de -5 a 10 kg (aproximadamente) hasta alcanzar una banda de diferencia de carga de -1 a 0 kg entre el valor deseado y la carga real, que emigran desde una válvula de control ON/OFF a la válvula HEATING JACKETED CONTROL (tipo WBV) de MORRIS VALVES.

doing well, Morris Up!
In Harmony with the Planet

This document is property of Morris Valves, Inc. Their total or partial reproduction is strictly forbidden.

QUALITY MANAGEMENT SYSTEM TEAM



HEATING JACKETED CONTROL VALVES

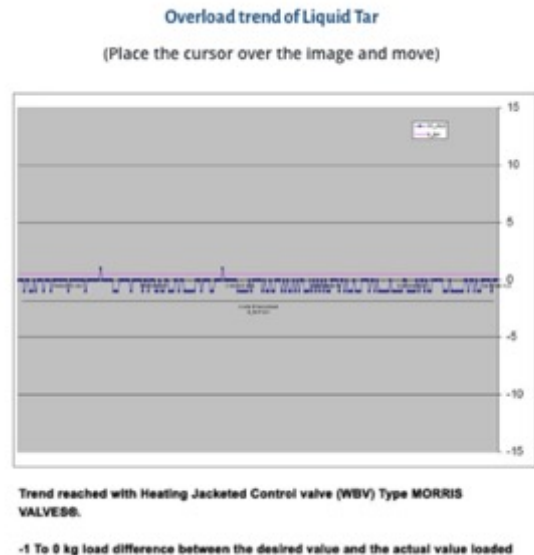


LOCATION



END USER

Control Valves para Brea de Alquitrán para Ánodos, **DN80/PN16**



Tendencia alcanzada con la Heating Jacketed Valve (WBV Type) de MORRIS VALVES.

-1 a 0 Kg de diferencia de carga entre el valor deseado y el valor real cargado.

doing well, Morris Up!
In Harmony with the Planet

This document is property of Morris Valves, Inc. Their total or partial reproduction is strictly forbidden.

QUALITY MANAGEMENT SYSTEM TEAM



API609 BUTTERFLY VALVES



LOCATION



END USER

BEFORE: Imagen suministrada por el cliente con su solicitud.



Center Line, Size: 42", Class 150, Flanged, Service: GAS.

doing well, Morris Up!
In Harmony with the Planet

This document is property of Morris Valves, Inc. Their total or partial reproduction is strictly forbidden.

QUALITY MANAGEMENT SYSTEM TEAM



API609 BUTTERFLY VALVES



LOCATION



END USER

AFTER: Válvula fabricada conforme solicitud de cliente.



Center Line, Size: 42", Class 150, Flanged, Service: GAS.

doing well, Morris Up!
In Harmony with the Planet

This document is property of Morris Valves, Inc. Their total or partial reproduction is strictly forbidden.

QUALITY MANAGEMENT SYSTEM TEAM



API609 BUTTERFLY VALVES



LOCATION



END USER

AFTER:



Center Line, Size: 42", Class 150, Flanged, Service: GAS.

doing well, Morris Up!
In Harmony with the Planet

This document is property of Morris Valves, Inc. Their total or partial reproduction is strictly forbidden.

QUALITY MANAGEMENT SYSTEM TEAM



API609 BUTTERFLY VALVES



LOCATION



END USER

FABRICACIÓN

Size: 18"

SUSTITUYEN VÁLVULAS JAMESBURY



doing well, Morris Up!
In Harmony with the Planet

This document is property of Morris Valves, Inc. Their total or partial reproduction is strictly forbidden.

QUALITY MANAGEMENT SYSTEM TEAM



API609 BUTTERFLY VALVES



LOCATION

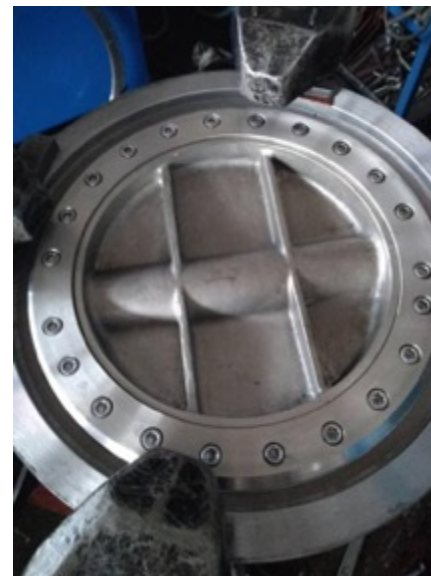


END USER

FABRICACIÓN

Size: 18"

SUSTITUYEN VÁLVULAS JAMESBURY



doing well, Morris Up!
In Harmony with the Planet

This document is property of Morris Valves, Inc. Their total or partial reproduction is strictly forbidden.

QUALITY MANAGEMENT SYSTEM TEAM

CONTROL VALVES



LOCATION



END USER



doing well, Morris Up!
In Harmony with the Planet

This document is property of Morris Valves, Inc. Their total or partial reproduction is strictly forbidden.

QUALITY MANAGEMENT SYSTEM TEAM



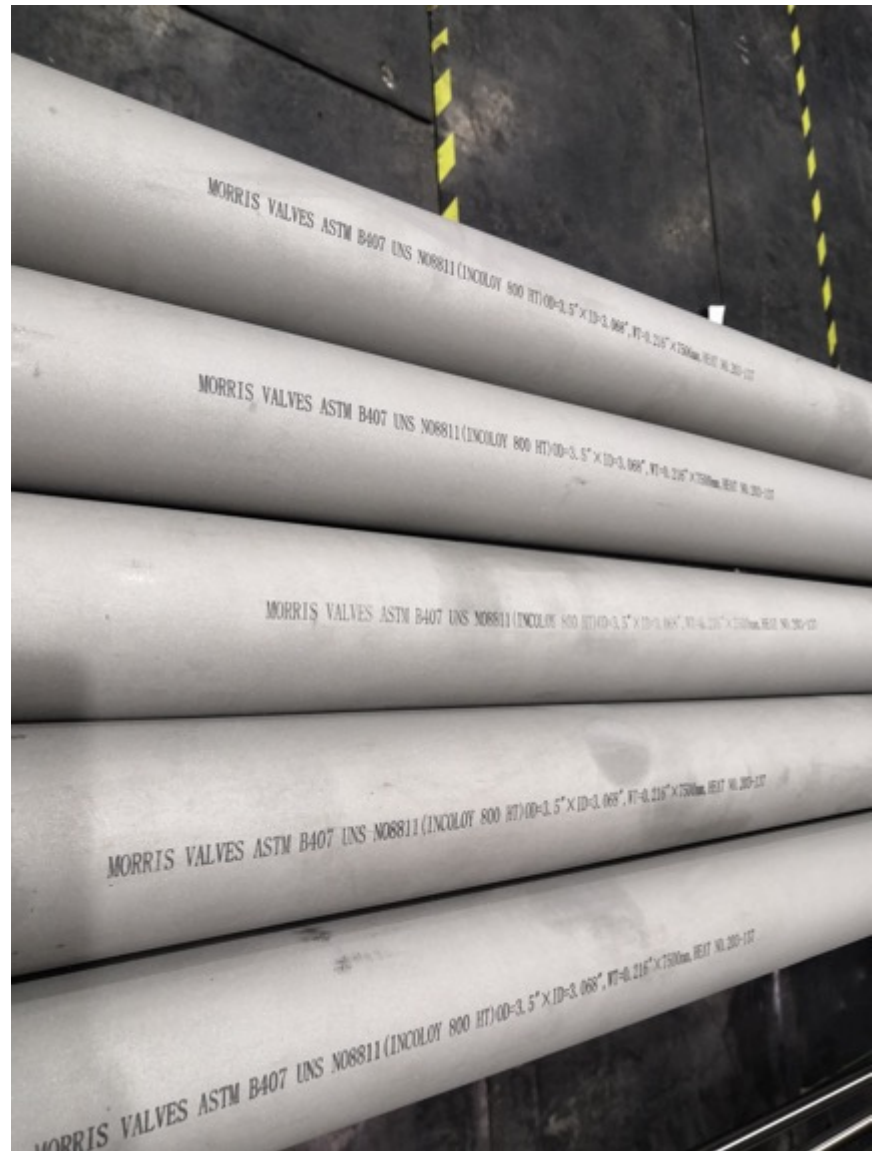
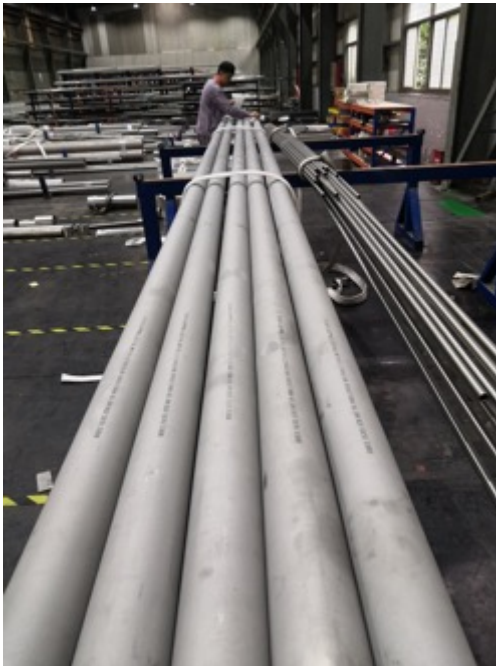
PIPE - INCOLOY 800 HT



LOCATION



END USER



doing well, Morris Up!
In Harmony with the Planet

This document is property of Morris Valves, Inc. Their total or partial reproduction is strictly forbidden.

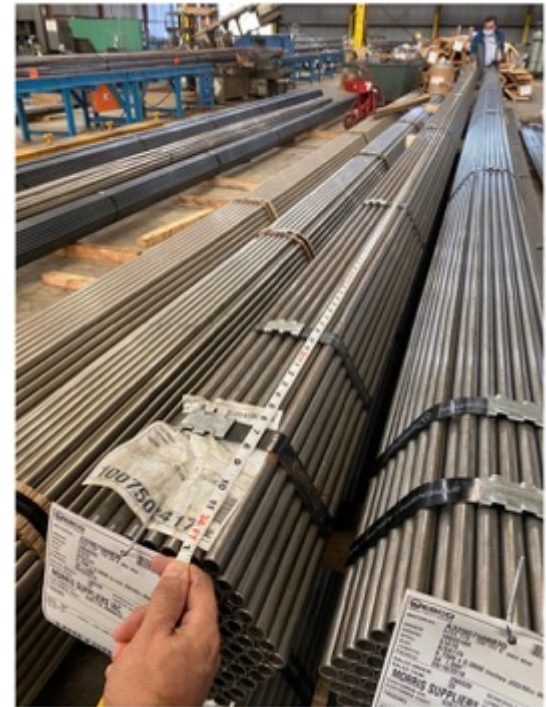
QUALITY MANAGEMENT SYSTEM TEAM



SEAMLESS STEEL TUBES SA179



LOCATION



doing well, Morris Up!
In Harmony with the Planet

This document is property of Morris Valves, Inc. Their total or partial reproduction is strictly forbidden.

QUALITY MANAGEMENT SYSTEM TEAM



ENGINEERING CHAINS



LOCATION



END USER



doing well, Morris Up!
In Harmony with the Planet

This document is property of Morris Valves, Inc. Their total or partial reproduction is strictly forbidden.

QUALITY MANAGEMENT SYSTEM TEAM



ENGINEERING CHAINS



LOCATION



END USER



doing well, Morris Up!
In Harmony with the Planet

This document is property of Morris Valves, Inc. Their total or partial reproduction is strictly forbidden.

QUALITY MANAGEMENT SYSTEM TEAM



ENGINEERING CHAINS



LOCATION



END USER



doing well, Morris Up!
In Harmony with the Planet

This document is property of Morris Valves, Inc. Their total or partial reproduction is strictly forbidden.

QUALITY MANAGEMENT SYSTEM TEAM



SPIRAL WOUND GASKETS



LOCATION



Orinoco Iron®

END USER



doing well, Morris Up!
In Harmony with the Planet

This document is property of Morris Valves, Inc. Their total or partial reproduction is strictly forbidden.

QUALITY MANAGEMENT SYSTEM TEAM



SPIRAL WOUND GASKETS



LOCATION



Orinoco Iron®

END USER



doing well, Morris Up!
In Harmony with the Planet

This document is property of Morris Valves, Inc. Their total or partial reproduction is strictly forbidden.

QUALITY MANAGEMENT SYSTEM TEAM



SPIRAL WOUND GASKETS

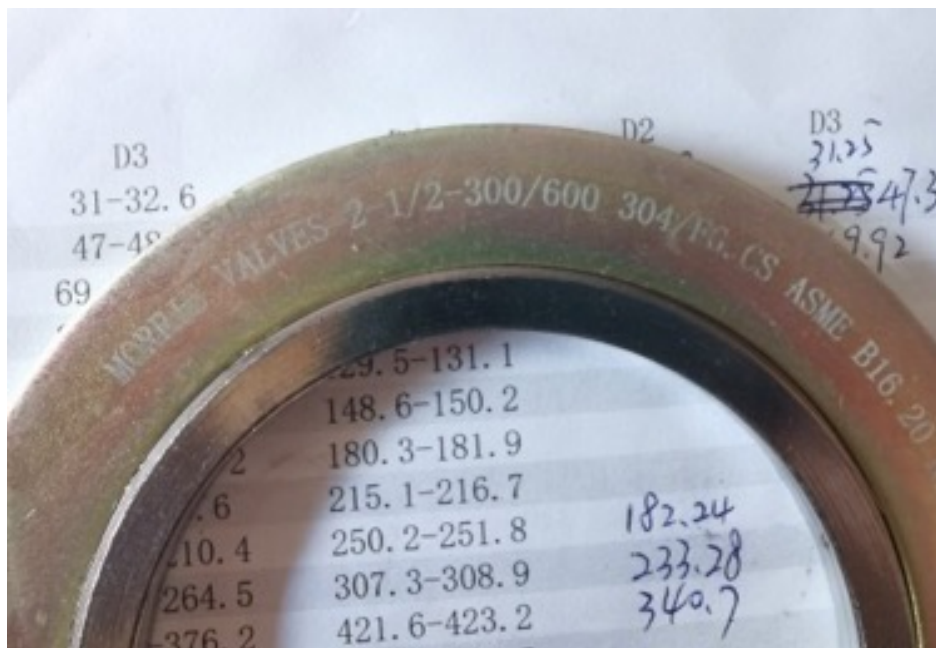


LOCATION



Orinoco Iron®

END USER



doing well, Morris Up!
In Harmony with the Planet

This document is property of Morris Valves, Inc. Their total or partial reproduction is strictly forbidden.

QUALITY MANAGEMENT SYSTEM TEAM



SPIRAL WOUND GASKETS

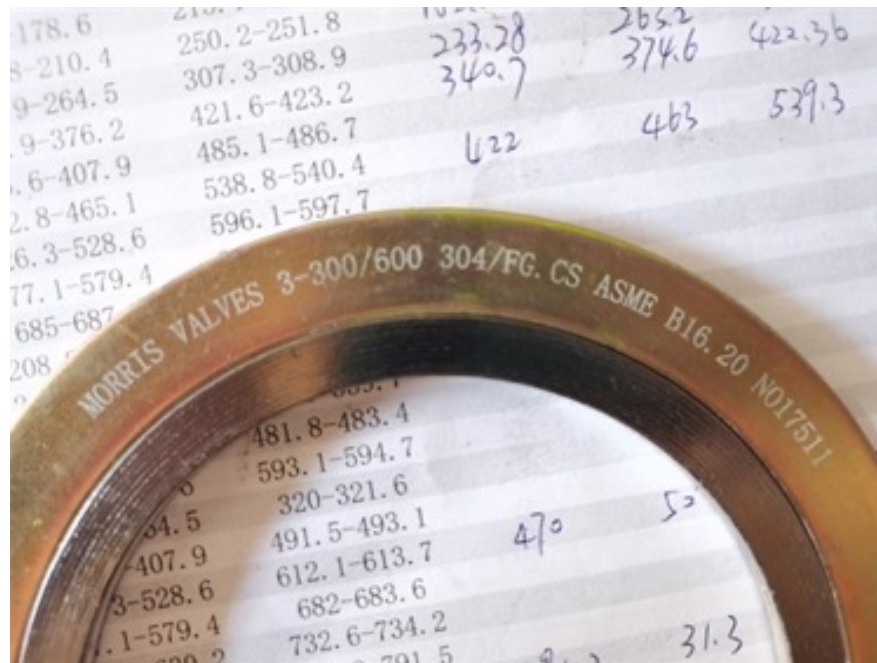


LOCATION



Orinoco Iron®

END USER



doing well, Morris Up!
In Harmony with the Planet

This document is property of Morris Valves, Inc. Their total or partial reproduction is strictly forbidden.

QUALITY MANAGEMENT SYSTEM TEAM



SPIRAL WOUND GASKETS



LOCATION



Orinoco Iron®

END USER

MORRIS VALVES 12-300 304/FG.CS ASME B16.20 NO17511

MORRIS VALVES 16-300 304/FG.CS ASME B16.20 NO17511

doing well, Morris Up!
In Harmony with the Planet

This document is property of Morris Valves, Inc. Their total or partial reproduction is strictly forbidden.

QUALITY MANAGEMENT SYSTEM TEAM



SPIRAL WOUND GASKETS



LOCATION



Orinoco Iron®

END USER

MORRIS VALVES 18-600 304/FG. CS ASME B16. 20 NO17511

MORRIS VALVES 20-150 304/FG. CS ASME B16. 20 NO17511

doing well, Morris Up!
In Harmony with the Planet 

This document is property of Morris Valves, Inc. Their total or partial reproduction is strictly forbidden.

QUALITY MANAGEMENT SYSTEM TEAM



DUST FILTER BAGS & HOLDERS



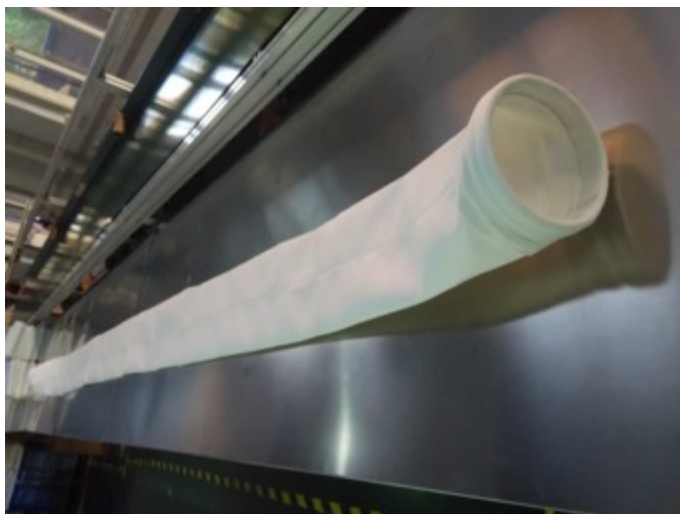
LOCATION



END USER

MANGAS COLECTORAS DE POLVO Y CESTAS

CANTIDAD SUMINISTRADA: 3,678 Mangas y 560 Cestas.



doing well, Morris Up!
In Harmony with the Planet

This document is property of Morris Suppliers Inc. Their total or partial reproduction is strictly forbidden.

QUALITY MANAGEMENT SYSTEM TEAM



DUST FILTER BAGS & HOLDERS



LOCATION



END USER

MANGAS COLECTORAS DE POLVO Y CESTAS

CANTIDAD SUMINISTRADA: 3,678 Mangas y 560 Cestas.



doing well, Morris Up!
In Harmony with the Planet

This document is property of Morris Suppliers Inc. Their total or partial reproduction is strictly forbidden.

QUALITY MANAGEMENT SYSTEM TEAM



BRASS BALL VALVES



LOCATION



END USER

400 PSI, NICKEL PLATED BRASS, **SEAT/PACKING:** PTFE

SIZES: 1/4", 1", 1-1/2", 1-1/4" & 2" ; **QTY:** 807 PCS



doing well, Morris Up!
In Harmony with the Planet

This document is property of Morris Valves, Inc. Their total or partial reproduction is strictly forbidden.

QUALITY MANAGEMENT SYSTEM TEAM



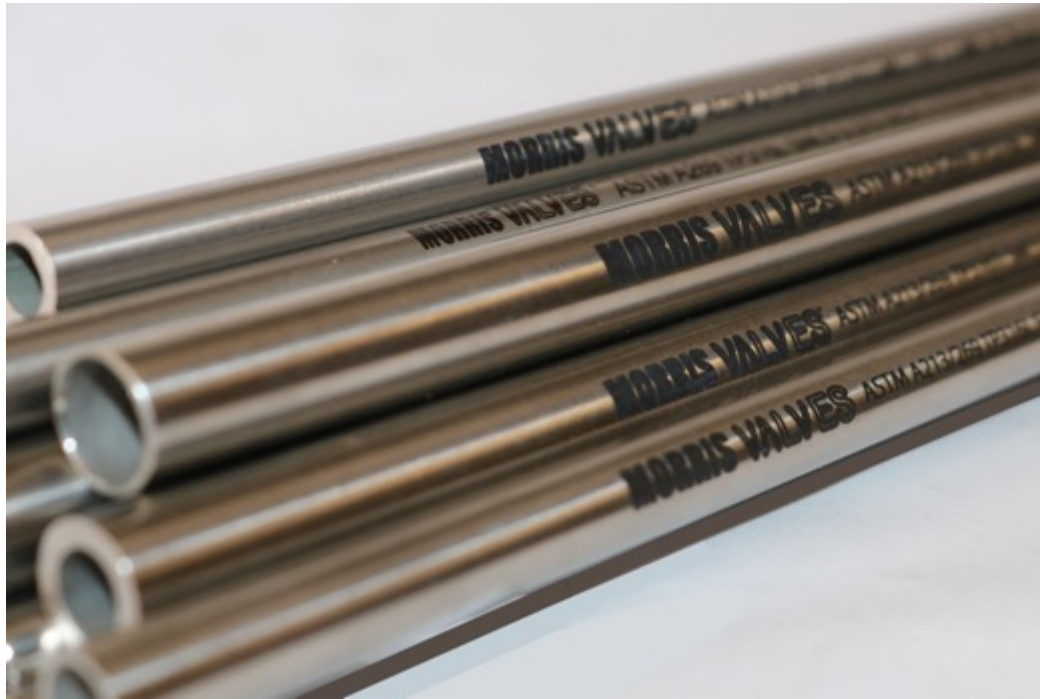
SEAMLESS TUBING



LOCATION



END USER



doing well, Morris Up!
In Harmony with the Planet

This document is property of Morris Valves, Inc. Their total or partial reproduction is strictly forbidden.

QUALITY MANAGEMENT SYSTEM TEAM



FLANGES



LOCATION



END USER

A105, WN: 20" – 24", CLASS 150,
RF, B16.5



doing well, Morris Up!
In Harmony with the Planet

This document is property of Morris Valves, Inc. Their total or partial reproduction is strictly forbidden.

QUALITY MANAGEMENT SYSTEM TEAM



FLANGES



LOCATION



END USER



doing well, Morris Up!
In Harmony with the Planet

This document is property of Morris Valves, Inc. Their total or partial reproduction is strictly forbidden.

QUALITY MANAGEMENT SYSTEM TEAM



FLANGES



LOCATION



END USER



doing well, Morris Up!
In Harmony with the Planet 

This document is property of Morris Valves, Inc. Their total or partial reproduction is strictly forbidden.

QUALITY MANAGEMENT SYSTEM TEAM



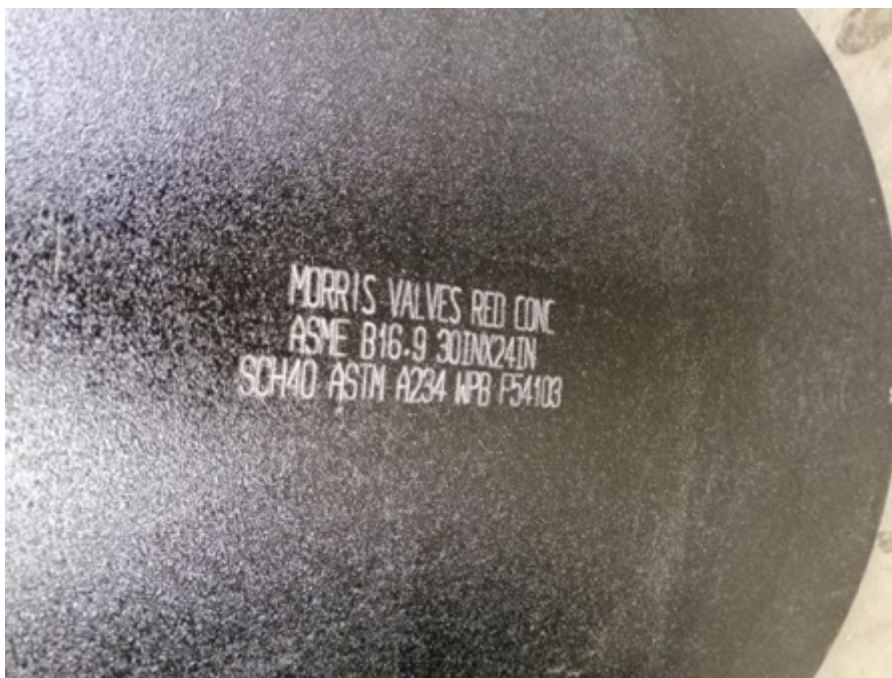
PIPE FITTINGS



LOCATION



END USER



doing well, Morris Up!
In Harmony with the Planet

This document is property of Morris Valves, Inc. Their total or partial reproduction is strictly forbidden.

QUALITY MANAGEMENT SYSTEM TEAM



CHECK VALVES



LOCATION



END USER



doing well, Morris Up!
In Harmony with the Planet

This document is property of Morris Valves, Inc. Their total or partial reproduction is strictly forbidden.

QUALITY MANAGEMENT SYSTEM TEAM



BUTTERFLY VALVES



LOCATION



END USER



doing well, Morris Up!
In Harmony with the Planet

This document is property of Morris Valves, Inc. Their total or partial reproduction is strictly forbidden.

QUALITY MANAGEMENT SYSTEM TEAM



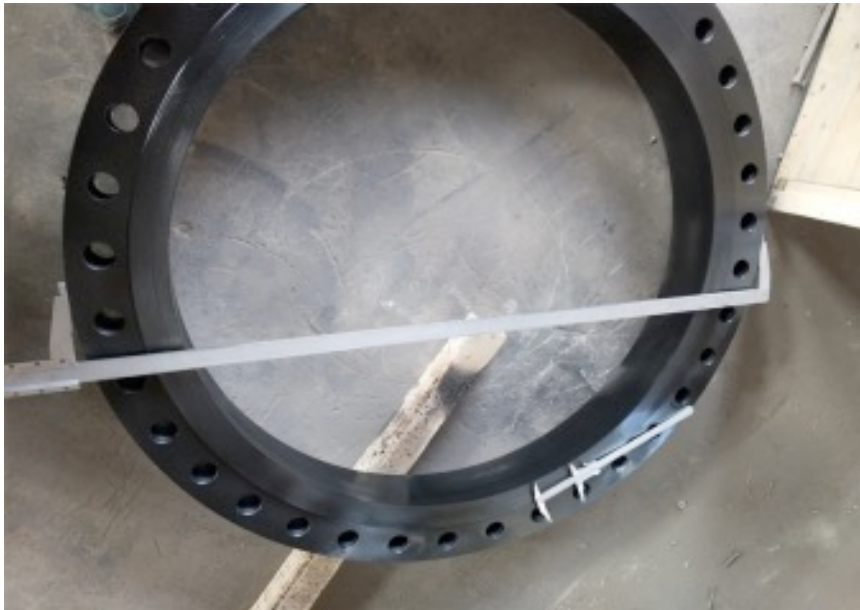
FLANGES



LOCATION



END USER



doing well, Morris Up!
In Harmony with the Planet

This document is property of Morris Valves, Inc. Their total or partial reproduction is strictly forbidden.

QUALITY MANAGEMENT SYSTEM TEAM



SPIRAL WOUND GASKETS



LOCATION



END USER



doing well, Morris Up!
In Harmony with the Planet 

This document is property of Morris Valves, Inc. Their total or partial reproduction is strictly forbidden.

QUALITY MANAGEMENT SYSTEM TEAM

ELECTRICAL ACTUATORS



LOCATION



END USER



doing well, Morris Up!
In Harmony with the Planet

This document is property of Morris Valves, Inc. Their total or partial reproduction is strictly forbidden.

QUALITY MANAGEMENT SYSTEM TEAM



GATE VALVE



LOCATION



END USER

GATE VALVE, API 600
SIZE: 12", CLASS 150, WCB

doing well, Morris Up!
In Harmony with the Planet

This document is property of Morris Valves, Inc. Their total or partial reproduction is strictly forbidden.

QUALITY MANAGEMENT SYSTEM TEAM



CHECK VALVE



LOCATION



END USER

SWING CHECK VALVE, API 6D

SIZE: 12", CLASS 300, WCB



doing well, Morris Up!
In Harmony with the Planet

This document is property of Morris Valves, Inc. Their total or partial reproduction is strictly forbidden.

QUALITY MANAGEMENT SYSTEM TEAM



WIRE ROPE SLINGS



doing well, Morris Up!
In Harmony with the Planet 

This document is property of Morris Valves, Inc. Their total or partial reproduction is strictly forbidden.

QUALITY MANAGEMENT SYSTEM TEAM



ENDLESS WEB SLINGS



doing well, Morris Up!
In Harmony with the Planet 

This document is property of Morris Valves, Inc. Their total or partial reproduction is strictly forbidden.

QUALITY MANAGEMENT SYSTEM TEAM